



Model: EXI 800 HP

Serial #: All

Apr. 3, 2019

Product Bulletin # TDS-195

Alert



Inspect Guard

Canrig advises all operators of EXI800 model top drives (upgrades and new builds) to perform an immediate visual inspection of the guard center section, concentrating on the parts of the guard where the center section fastens to the upper and lower sections.

If cracks are found, stop operations immediately. Contact RigLine 24/7™ for a remedial action plan. If no cracks are found, operations may resume. Continue to follow the daily inspection requirements as per the top drive maintenance guide.

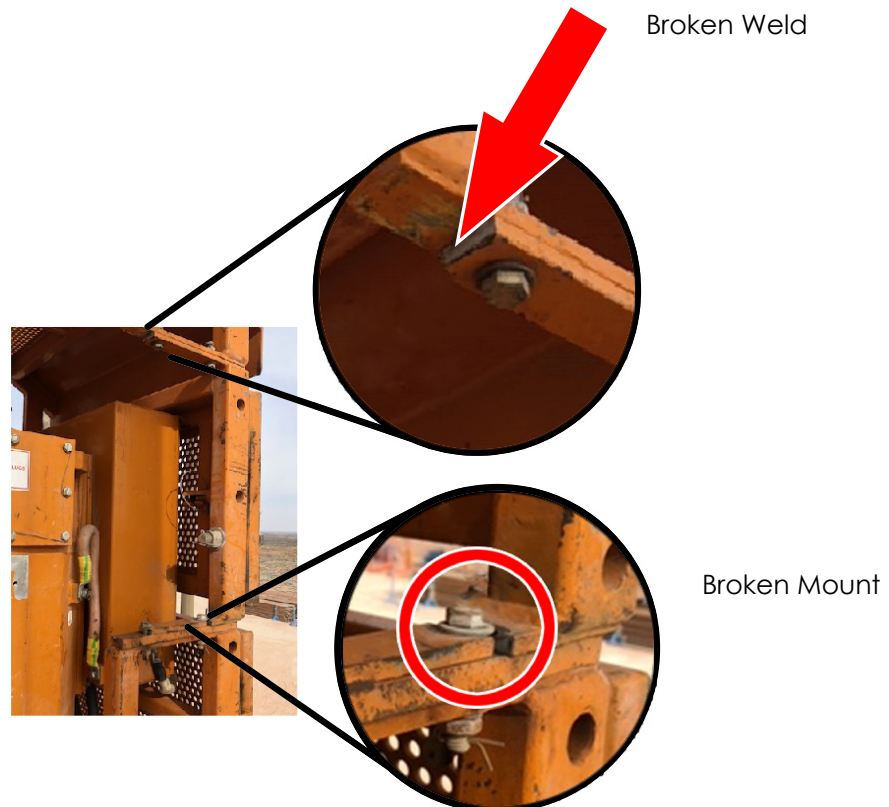


Figure 1: Inspect Guard (EXI 800HP Shown)