



Model: All	Feb. 10, 2016
Serial #: All	
Product Bulletin # TDS-157	

## Link Support Wear Limits

---

Allowable wear of the link support ears with the minimum usable size has been determined.

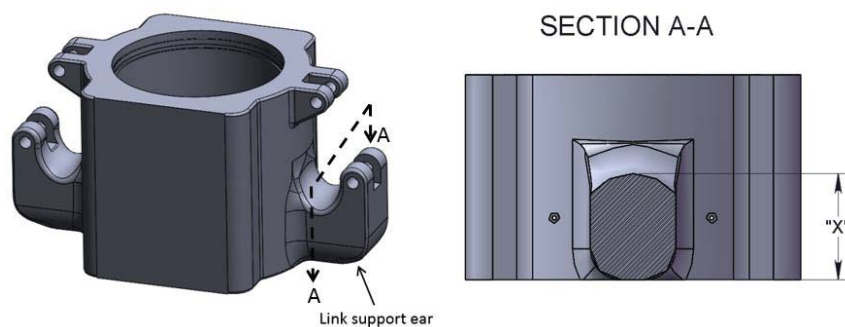
An updated version with this information from the Top Drive manual page 4-42 is attached for reference.

Link supports with dimensions less than the minimum specified should be replaced at the earliest convenience.

## Wear Limits

Load Path components are designed to meet the safety factors outlined in the API Specification 8C for certain load capacities. As the components wear, the load rating may have to be de-rated to maintain the proper API 8C safety factors. The following are the wear limits for the load path components:

- The nominal load rating is maintained if the wear is less than 5% for all load path components of the top drive with the exception of the Link Support.
- The nominal load rating must be reduced by 5% if the wear is between 5% and 10% for all load path components of the top drive with the exception of the Link Support.
- Canrig engineering must be contacted if the wear is above 10% for all load path components other than the link support.



**Table 1: Link Support Wear Limits**

Top Drive Tons	Link Support Part No.	Link Support Ear Dimension "X"	Load Rating Tons
750	913-10-0	6.75" – 7.75" (171mm – 197mm)	750
		Less than 6.75" (171mm)	<b>Replace</b>
500	743-10-0	6.75" – 7.75" (171mm – 197mm)	500
		Less than 6.75" (171mm)	<b>Replace</b>
350	683-10-0	5.75" – 6.75" (146mm – 171mm)	350
		Less than 5.75" (146mm)	<b>Replace</b>
275	810-10-0	5" – 6" (127mm – 152mm)	275
		Less than 5" (127mm)	<b>Replace</b>
175	DT12769-0	3.94" – 4.94" (100mm – 125mm)	175
		Less than 3.94" (100mm)	<b>Replace</b>